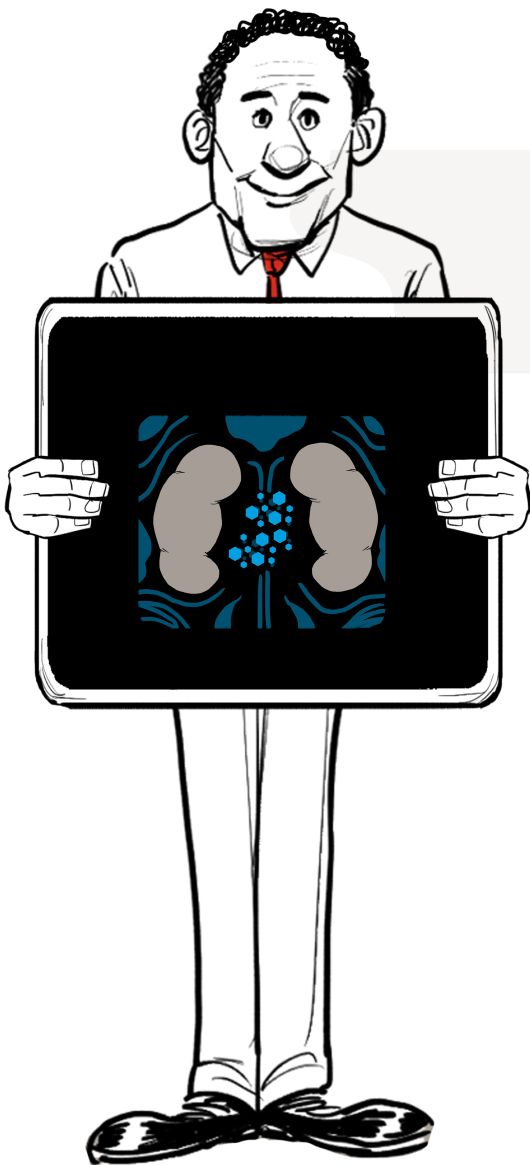
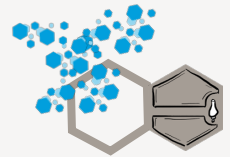


WHAT IS A SGLT-2 INHIBITOR?

IF YOUR DOCTOR IS CONSIDERING A SGLT-2 INHIBITOR
your body likely needs help balancing your blood sugar levels.



For people with Type 2 diabetes, your cells cannot use and store sugar properly, and your sugar levels rise



SGLT-2 INHIBITORS

help your kidneys remove this extra sugar from your blood through your urine.

YOU SHOULD KNOW:

All medicines, including SGLT-2 inhibitors have side effects. As you and your doctor discuss treatment options, it is important that you ask about the benefits and risks of each treatment option.

Text the keyword **SGLT2** to 85099 to watch the video on your mobile phone or visit [LillyDiabetes.com/Type2](https://www.LillyDiabetes.com/Type2) to learn more about Type 2 diabetes. Message and data rates may apply.

For informational purposes only. Not an endorsement of any Lilly product.

American Diabetes Association® Standards of Medical Care

PP-LD-US-2238 10/2020 ©Lilly USA, LLC 2020.

All rights reserved.

TYPE
2

DIABETES

Lilly