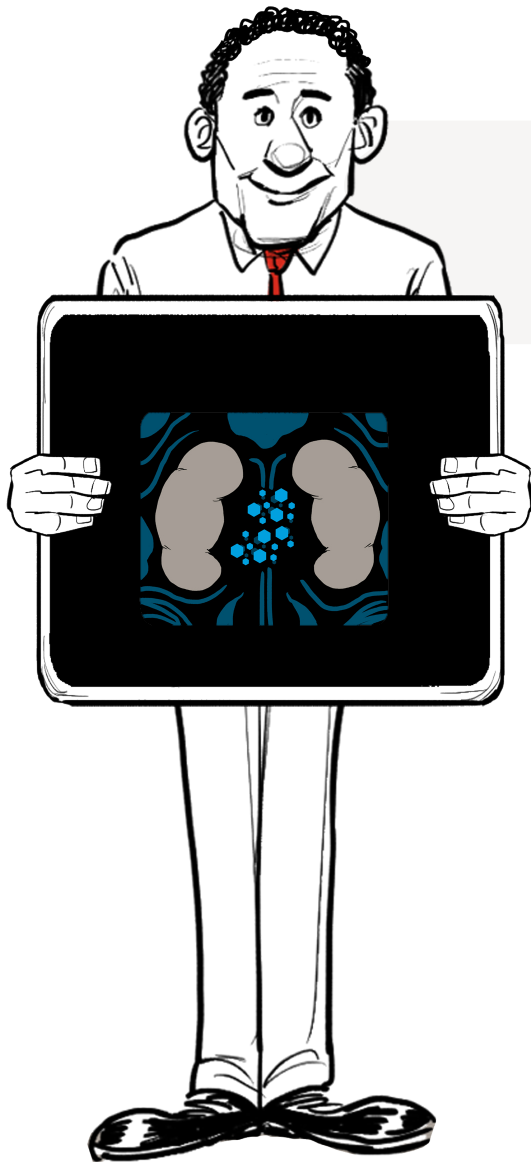


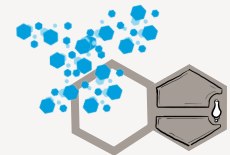


WHAT IS A SGLT-2 INHIBITOR?

IF YOUR DOCTOR IS CONSIDERING A SGLT-2 INHIBITOR
your body likely needs help balancing your blood sugar levels.



For people with Type 2 diabetes, your cells cannot use and store sugar properly, and your sugar levels rise



SGLT-2 INHIBITORS

help your kidneys remove this extra sugar from your blood through your urine.

YOU SHOULD KNOW:

All medicines, including SGLT-2 inhibitors have side effects. As you and your doctor discuss treatment options, it is important that you ask about the benefits and risks of each treatment option.

Text the keyword **SGLT2** to 85099 to watch the video on your mobile phone or visit LillyDiabetes.com/Type2 to learn more about Type 2 diabetes. Message and data rates may apply.